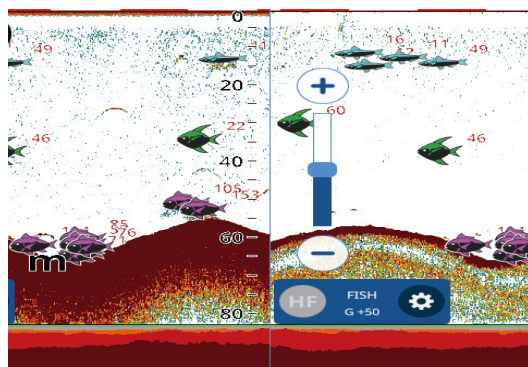


### 7/9-inch Chart Plotter and Fish Finder Powered by BLUEBEAM



#### Key Features:

- Up to 1kW Chirp/Rezboost transducer compatibility
- Dual range sounder mode
- Accu-Fish and Bottom Discrimination
- Built-in antenna—optional external antenna
- Simple multi-touch interface plus anti finger print screen
- Programmable finger touch gestures
- White edge function enhances discrimination between bottom fish and sea-bed
- Polarised glass friendly and bonded colour LCD provides clear view in any weather conditions

#### Additional Features:

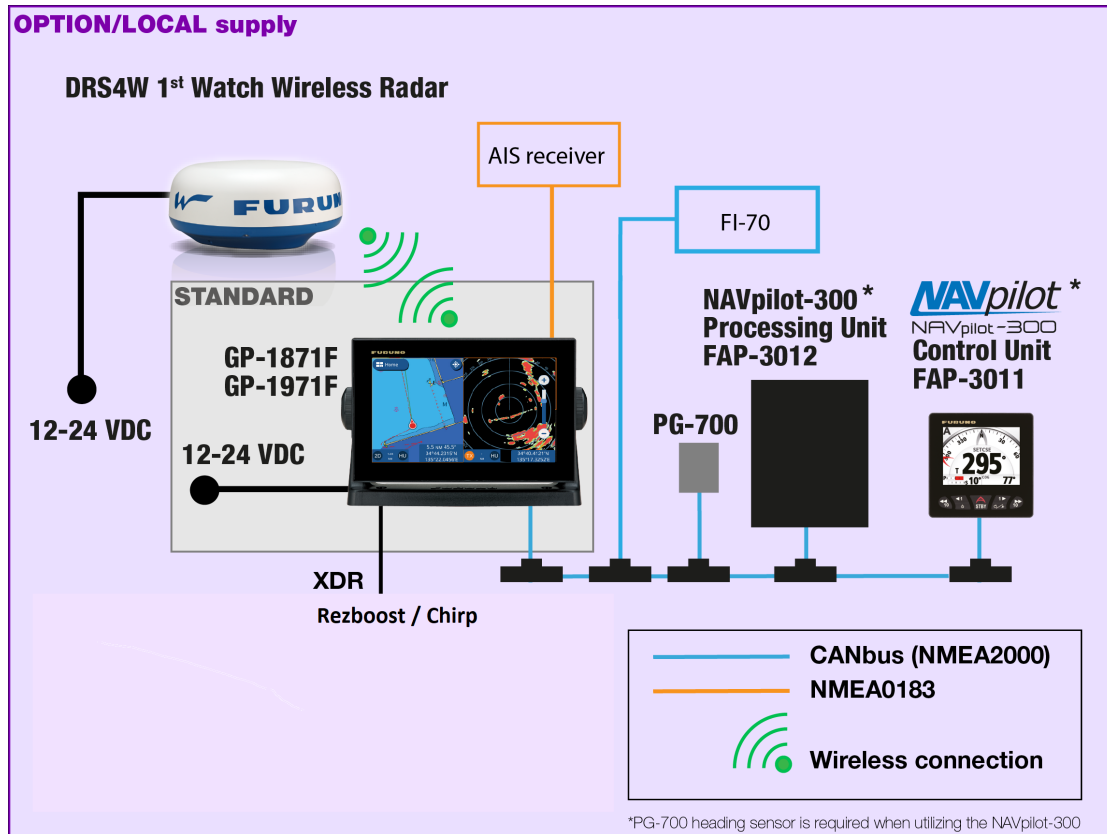
- Autopilot interface with NAVpilot
- Detailed charting with C-MAP 4D
- First Watch Wireless Radar connectivity
- AIS display
- Download C-weather information
- External mark function available with FCV series
- Easy screenshot
- Multiple customizable display modes

### Popular Transducer Selection

Model	P66	TM260	TM150M	TM185M
Max Depth *	235 - 353 m	529 - 735 m	183 m	457 m
Mounting	Transom	Transom	Transom	Transom
Power	600 W	1 kW	300 W	1 kW
Frequency	50 / 200 kHz	50 / 200 kHz	95 - 155 kHz	85-135 kHz
ACCU-FISH, Bottom Discrimination and Rezboost Capable	Yes	Yes	No	No
Chirp Capable	No	No	Yes	Yes

\* note: maximum depth capability can be affected by factors including sea condition, water temperature and installation. Other transducer selections and options available on request.

## Interconnection Capabilities



## Warranty Period

Two years from date of sale.

## Technical Support

ENL is the New Zealand and South Pacific distributor and support centre for Furuno Electric Co. Ltd., the world's leading marine electronics developer and manufacturer. ENL has skilled and experienced technicians in its Auckland and Nelson offices specially trained to service all Furuno equipment.



### Electronic Navigation Limited

46 Hillside Road, Wairau Valley 0627  
P O Box 5849, Auckland 1141  
New Zealand

Phone: +64 9 3735595  
Email: [enquiries@enl.co.nz](mailto:enquiries@enl.co.nz)